



Engine	Weichai WP4G95E221
Rated Power	70 kW (94 hp / 95 ps) @ 2,200 rpm
Maximum Speed	36 km/h
Standard Loader Bucket Capacity	1.0 m ³
Standard Backhoe Bucket Capacity	0.2 m ³
Operating Weight	8,400 kg

777A BACKHOE LOADER

777A SPECIFICATIONS >>>

ENGINE	
Emission Regulation	Stage II
Manufacturer	Weichai
Model	WP4G95E221
Rated Power	70 kW (94 hp / 95 ps) @ 2,200 rpm
Peak Torque	383 N·m @ 1,500 rpm
Displacement	4.5 L

ELECTRICAL SYSTEM	
System Voltage	12 V
Battery Rating	95 amp-hr

DRIVE TRAIN	
Number of Drive Wheels	4WD
1st Maximum Speed, fwd/rev	5.9 km/h
2nd Maximum Speed, fwd/rev	10.7 km/h
3rd Maximum Speed, fwd/rev	20.5 km/h
4th Maximum Speed, fwd/rev	36 km/h
Turning Radius Outside of Front Tire without single braking	4,400 mm
Turning Radius Outside of Bucket without single braking	5,554 mm

BRAKES	
Service Brake Type	Wet Disc
Service Brake Actuation	Hydraulic

TIRES	
Front Tire Size	14-17.5NHS-14PR TL
Rear Tire Size	19.5L-24-12PR

HYDRAULIC SYSTEM	
Circuit Type	Open
Total Flow	143 L/min
Main Relief Pressure	24 Mpa
Pump Type	Tandem Gear Pump
Steering Type	2 WS

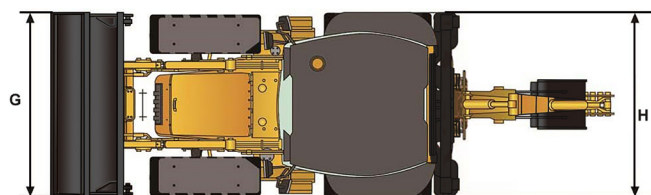
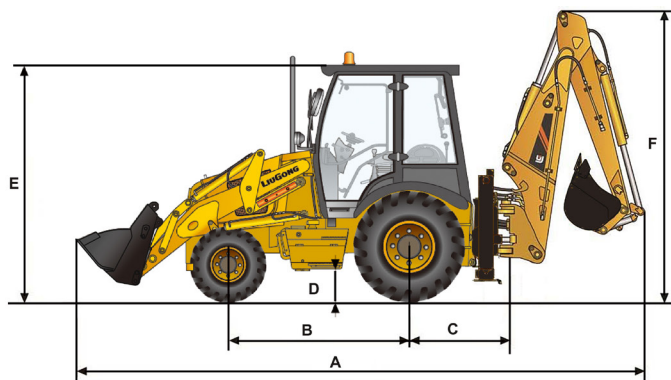
OPERATING WEIGHTS	
Operating Weight	8,400 kg

LOADER PERFORMANCE	
Standard Bucket Type (referenced)	General Load Bucket
Heaped Capacity ISO (referenced)	1.0 m ³
Standard Bucket Width (referenced)	2,260 mm
Boom Lift Capacity at Full Height	30.2 kN
Bucket Breakout Force	59.3 kN
Maximum Dump Angle at Full Height	45°
Dump Height at Maximum Angle	2,691 mm
Dump Reach at Full Height Discharge	713 mm
Boom Lift Capacity, end, at ground	49.3 kN
Maximum Dig Depth	89 mm

BACKHOE PERFORMANCE	
Standard Bucket Type (referenced)	General Bucket
Heaped Capacity ISO (referenced)	0.2 m ³
Standard Bucket Width (referenced)	610 mm
Maximum Dig Depth	4,440 mm
Reach From Swing Pivot at Ground	5,443 mm
Turning Angle of Bucket	186°
Bucket Digging Force, standard Arm	58.2 kN
Arm Digging Force	37.5 kN
Loading Height	3,554 mm
Loading Reach from Swing Pivot	3,007 mm

SERVICE CAPACITIES	
Fuel Tank	130 L
Engine Oil	13 L
Cooling System	15 L
Hydraulic Oil Tank	130 L
Hydraulic System Total	170 L
Axle, front	5.5+0.7*2 L
Axle, rear	16 L

DIMENSIONS	
A Shipping Length	5,785 mm
B Wheelbase	2,210 mm
C Length from Rear Axle to Swing Pivot	1,369 mm
D Min. Ground Clearance	300 mm
E Height To Top of Cab	2,876 mm
F Shipping Height	3,544 mm
H Shipping Width	2,280 mm
G Bucket Width	2,260 mm



Unit:mm

Guangxi Liugong Machinery Co., Ltd.

No. 1 Liutai Road, Liuzhou, Guangxi 545007, PR China
 T: +86 772 3886124 E: overseas@liugong.com
 www.liugong.com

Specifications and designs are subject to change without notice. Machines shown may include optional equipment. Liugong standard and optional equipment may vary from region to region. Please consult your Liugong dealer for information specific to your area. Engine power kW is converted to horsepower (1 kW=1.3596 ps and 1 kW=1.3410 hp) in this file.

03/2026 Designed by LiuGong
 Replace the previous versions of 01/2025