



Note: The machine shown on this illustration is fitted with a T3 Engine installation

Engine	Cummins QSK23
Rated Power	567 kW (760 hp / 771 ps) @ 1,800 rpm
Maximum Dig Depth	8,059 mm (26'5")
Standard Bucket Capacity	9.0 m ³ (11.8 yd ³)
Operating Weight	126,000 kg (277,782 lbs)

9135F EXCAVATOR

TOUGH WORLD. TOUGH EQUIPMENT.

9135F SPECIFICATIONS >>>

ENGINE

Emission Regulation	Stage V
Manufacturer	Cummins
Model	QSK23
Rated Power	567 kW (760 hp / 771 ps) @ 1,800 rpm
Peak Torque	3,468 N·m (2,558 lbf·ft) @ 1,350 rpm
Number of Cylinders	6
Displacement	23 L (6 gal)

UNDERCARRIAGE

Number of Shoes per Side	50
Number of Upper Rollers per Side	3
Number of Bottom Rollers per Side	8

SWING SYSTEM

Swing Speed	6.2 r/min
-------------	-----------

TRACK DRIVE

Maximum Travel Speed	3.3 km/h (2.1 mph)
Drawbar Pull	710 kN (179,038 lbf)

HYDRAULIC SYSTEM

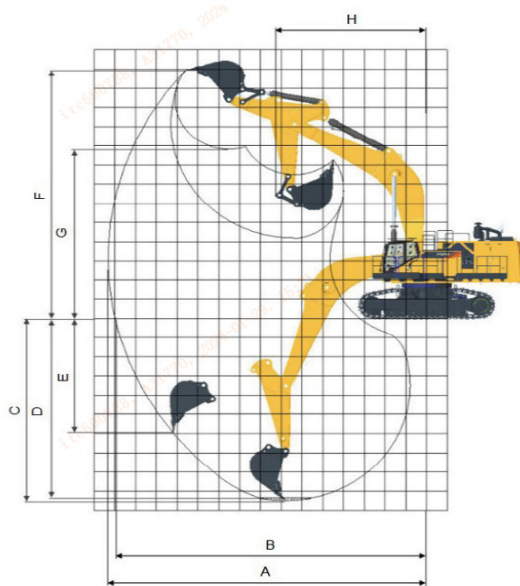
Main Pumps Total Flow	2,039 L/min (539 gal/min)
Relief Pressure, main	37 MPa (5,366 psi)

DIMENSION

A Shipping Length	14,755 mm (48'5")
B Shipping Height – Top of Boom	6,364 mm (20'11")
C Track Gauge	3,900 mm (12'10")
D Undercarriage Width	4,600 mm (15'1")
E Length to Center of Rollers	5,220 mm (17'2")
F Track Length	6,624 mm (21'9")
G Overall Width of Upper Structure	5,743 mm (18'10")
H Tail Length	4,780 mm (15'8")
I Counterweight Ground Clearance	1,325 mm (4'4")
J Overall Height of Cab	4,078 mm (13'5")
K Min. Ground Clearance	1,084 mm (3'7")
L Track Shoe Width	700 mm (2'4")

BUCKET PERFORMANCE

Std. Bucket Heaped Capacity (Referenced)	9.0 m ³ (11.8 yd ³)
--	--



BOOM & ARM

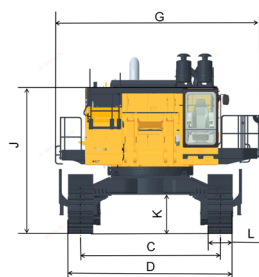
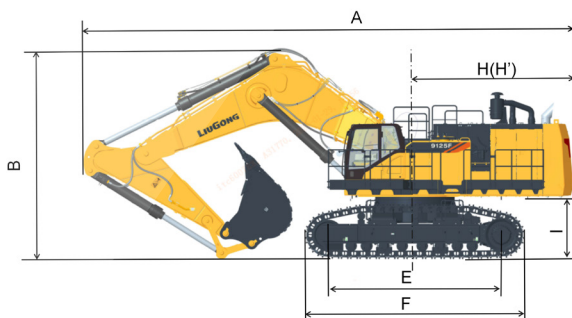
Boom Length	7,550 mm (24'9")
Arm Length	3,200 mm (10'6")

WORKING RANGE

A. Max. Digging Reach	13,876 mm (45'6")
B. Max. Digging Reach on Ground	13,505 mm (44'4")
C. Max. Digging Depth	8,059 mm (26'5")
D. Max. Digging Depth (2.44m) Level	7,897 mm (25'11")
E. Max. Vertical Wall Digging Depth	6,634 mm (21'9")
F. Max. Cutting Height	12,508 mm (41')
G. Max. Dumping Height	7,775 mm (25'6")
H. Min. Front Swing Radius	6,628 mm (21'9")
Bucket Digging Force (ISO)	648 kN (145,676 lbf)
Arm Digging Force (ISO)	550 kN (123,644 lbf)

SERVICE CAPACITIES

Fuel Tank	1,520 L (401.5 gal)
Engine Oil	70 L (18.5 gal)
Cooling System	113.5 L (30 gal)
Hydraulic Reservoir	750 L (198 gal)
Hydraulic System Total	1,150 L (304 gal)



Guangxi Liugong Machinery Co., Ltd.

No. 1 Liutai Road, Liuzhou, Guangxi 545007, PR China
 T: +86 772 3886124 E: overseas@liugong.com
 www.liugong.com

03/2025 Designed by LiuGongReplace the previous versions of 02/2025

Specifications and designs are subject to change without notice. Machines shown may include optional equipment. LiuGong standard and optional equipment may vary from region to region. Please consult your LiuGong dealer for information specific to your area. Engine power kW is converted to metric hp in this file (1 kW=1.34 hp).