



<b>Engine</b>	Cummins QSM11
<b>Rated Power</b>	280 kW (375 hp / 381 ps) @ 2,000 rpm
<b>Net Power</b>	260 kW (349 hp / 354 ps) @ 2,000 rpm
<b>Maximum Digging Depth</b>	6,521 mm
<b>Standard Bucket Capacity</b>	3.2 m <sup>3</sup>
<b>Operating Weight</b>	49,500 kg

# 952E<sub>HD</sub> EXCAVATOR

TOUGH WORLD. TOUGH EQUIPMENT.

# 952E<sub>HD</sub> SPECIFICATIONS >>>

## PERFORMANCE PARAMETERS

Operating Weight	49,500 kg
Std. Bucket Heaped Capacity (Referenced)	3.2 m <sup>3</sup>
Maximum Travel Speed	5.3 km/h
Swing Speed	8.5 rpm
Drawbar Pull	386 kN
Bucket Digging Force (ISO)	* 290 / 310 kN
Arm Digging Force (ISO)	* 268 / 287 kN

\* Normal / Power Boost

## ENGINE

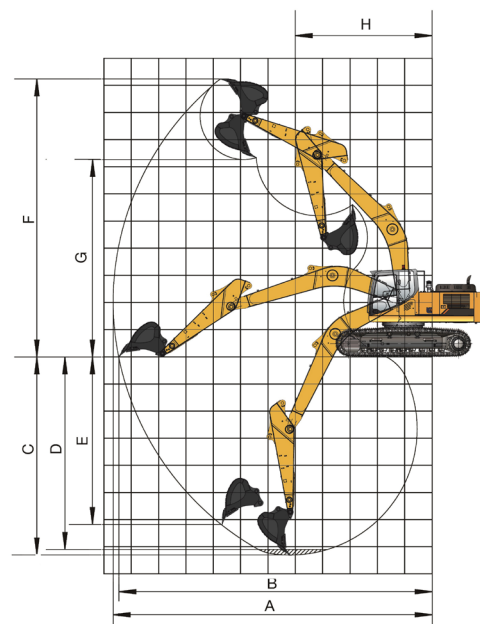
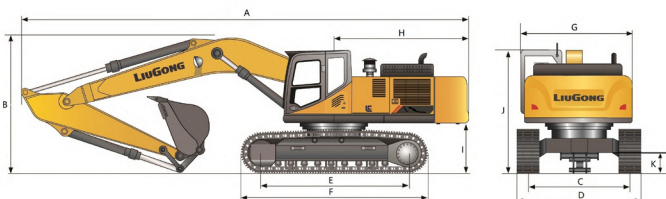
Emission Regulation	Tier 3 / Stage IIIA
Manufacturer	Cummins
Model	QSM11
Rated Power	280 kW (375 hp / 381 ps) @ 2,000 rpm
Net Power	260 kW (349 hp / 354 ps) @ 2,000 rpm
Peak Torque	1,898 N·m @ 1,400 rpm
Number of Cylinders	6
Displacement	10.8 L

## UNDERCARRIAGE

Number of Shoes per Side	50
Number of Bottom Rollers per Side	9
Number of Upper Rollers per Side	2

## DIMENSIONS

A Shipping Length	11,515 mm
B Shipping Height	3,810 mm
C Track Gauge	2,740 mm
D Undercarriage Width	3,340 mm
E Length to Center of Rollers	4,475 mm
F Track Length	5,500 mm
G Overall Width of Upper Structure	3,302 mm
H Tail Swing Radius	3,800 mm
I Counterweight Ground Clearance	1,324 mm
J Overall Height of Cab	3,307 mm
K Min. Ground Clearance	532 mm



## WORKING RANGE

Boom Length	6,500 mm
Arm Length	2,550 mm
A Max. Digging Reach	10,625 mm
B Max. Digging Reach on Ground	10,388 mm
C Max. Digging Depth	6,521 mm
D Max. Digging Depth, 2.44 m (8') Level	6,337 mm
E Max. Vertical Wall Digging Depth	5,204 mm
F Max. Cutting Height	9,977 mm
G Max. Dumping Height	7,038 mm
H Min. Front Swing Radius	4,645 mm

## HYDRAULIC SYSTEM

Main Pumps Total Flow	2 x 380 L/min
Relief Pressure, main	34.3 MPa
Relief Pressure, boost	37.2 MPa

## SERVICE CAPACITIES

Fuel Tank	650 L
Engine Oil	37.8 L
Cooling System	50 L
Hydraulic Reservoir	212 L
Hydraulic System Total	392 L

## Guangxi Liugong Machinery Co., Ltd.

No. 1 Liutai Road, Liuzhou, Guangxi 545007, PR China  
T: +86 772 3886124 E: overseas@liugong.com  
www.liugong.com

Specifications and designs are subject to change without notice. Machines shown may include optional equipment. Liugong standard and optional equipment may vary from region to region. Please consult your Liugong dealer for information specific to your area. Engine power kW is converted to horsepower (1 kW=1.3596 ps and 1 kW=1.3410 hp) in this file.

03/2025 Designed by Liugong  
Replace the previous versions of 02/2024