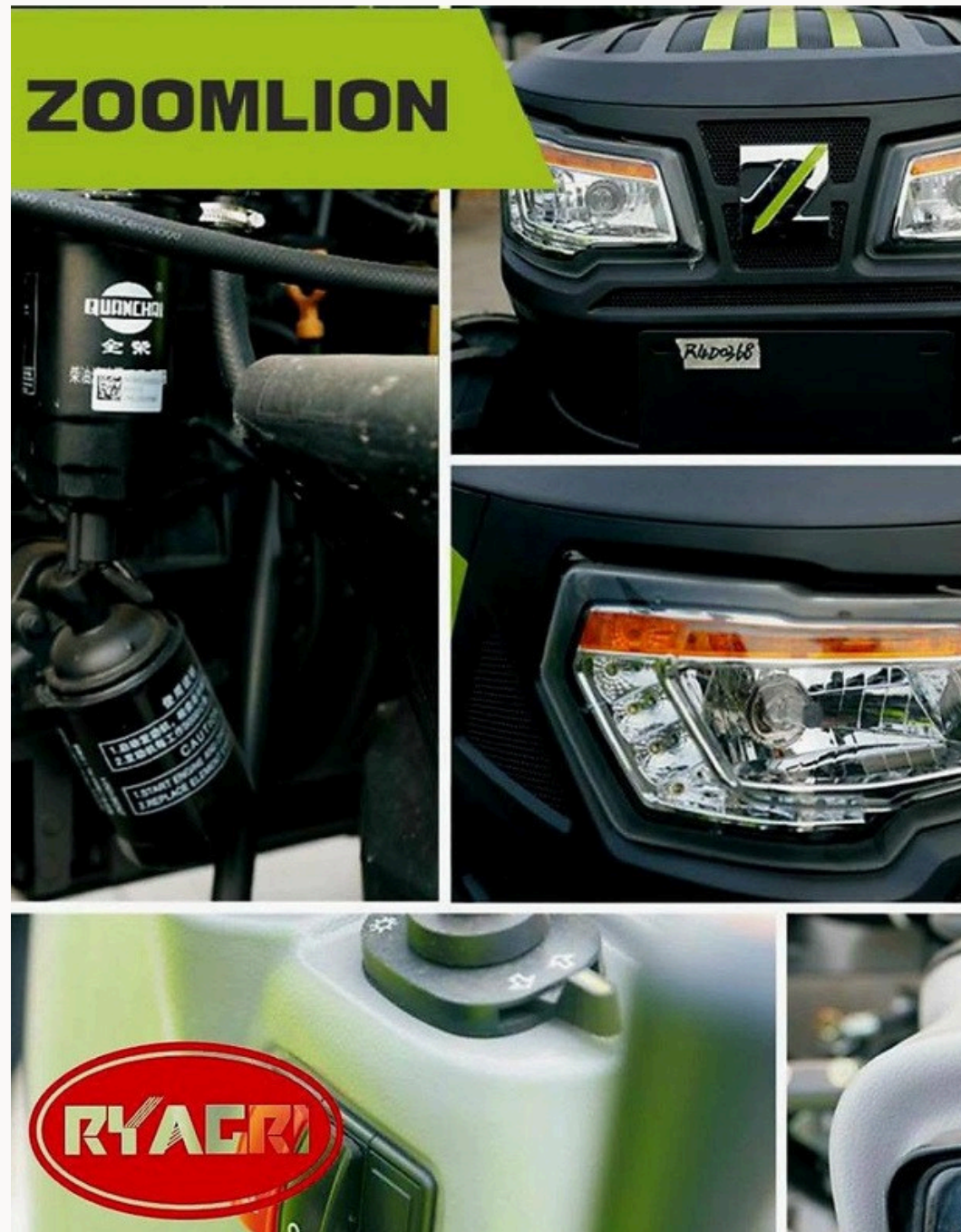




Zoomlion Catalogue

TRACTOR COLLECTION



About us

RY AGRI / ZOOMLION

At Zoomlion, we envision a future where farming is efficient, productive, and sustainable. Our tractors are designed to empower farmers to cultivate their land with ease, precision, and passion.

Zoomlion, a leading manufacturer of agricultural equipment, has been committed to delivering high-quality tractors that meet the evolving needs of farmers. With a focus on innovation, reliability, and customer satisfaction, we've become a trusted partner for farmers across the globe.

R215 000
ex vat



RD504

Powerful & Agile Legend Reforced

Tractor Specifications

- **Engine Power:** 50HP (36.8kW) Weichai engine
- **Gearbox:** 8F+8R gearbox
- **Lifting Power:** 1236kg
- **Fuel Tank Capacity:** 83L
- **PTO Output Power:** 30kW
- **PTO Speed:** 540/ rpm

ZOOMLION

RYAGRI
INTEGRITY BY NATURE

R295 000
ex vat



RK754-A

Mighty & Potent and Robust

Tractor Specifications

- **Engine Power:** 55.4 kW (75 HP)
- **Gearbox:** 12F+12R
- **Hydraulic Lifter Type:** Semi-individually mounted
- **Max Lifter Force:** ≥ 15 kN
- **PTO Speed:** 540/760 rpm, optional 540/1000 rpm
- **Tyre Specification:** 8.3-24 paddy tire (front), 11-32 paddy tire or 14.9-30 (rear)
- **Dimensions:** 4085×1742×2850 mm
- **Weight:** Approximately 2960 kg

RY AGRICULTURE

www.ryagri.com



RN904



Zoomlion RN904 Tractor

Engine Power: 90HP (66.2kW)

Gearbox: 16F+12R

PTO Speed: 540/1000 rpm

Hydraulic System: 3-point linkage, category II

Fuel Tank Capacity: 120L

Tyres: 12.4-24 (front), 16.9-34 (rear)

Engine

- Power: 95.6 kW (130 HP)
- Emission Standard: National III
- Fuel Consumption Rate: ≤ 250 g/kW•h

Transmission

- Gearbox: 16F+8R meshing sleeve shift
- Brake Mode: Wet

Dimensions

- Length: 5,200 mm
- Width: 2,435 mm
- Height: 3,250 mm
- Wheelbase: 2,640 mm

Weight

- Minimum Operating Mass: 5,455 kg

Tyres

- Front: 14.9-26
- Rear: 18.4-38

Hydraulic System

- Lifting Capacity: ≥ 35 kN
- Hydraulic Output Multi-way Valve: 3 groups

PTO

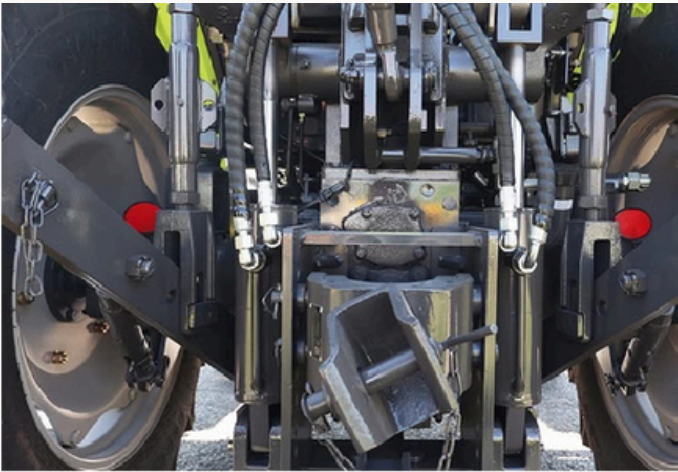
- Power Output: 85/105 kW
- Speed: 540/1000 rpm

Cab

- Air-conditioned cab with adjustable steering wheel and air-suspended seat

RY AGRICULTURE

www.ryagri.com





Contact Us

At Ry Agriculture, we're committed to empowering farmers with top-notch equipment and expert support. From planting to harvesting, we're with you every step of the way.

Timothy Schuler (Sales Representative)

+27(0)66 179 1124 / +27(0)79 755 1103

066 179 1124

Timothy@ryagri.com

<http://www.ryagri.com/>

<https://www.i-buy-ryagri.com/>

Batoliet Rd & Marmer Rd, Valley Settlements, Meyerton 1961 S.A.



RY AGRICULTURE (PTY) LTD.

FARMING SOLUTION FOR SMALLHOLDER