



You focus on farming. We handle the rest



One system Better soil Better crops Better animals More profit

Built for South African farmers
Simple | Affordable | Real-time

What is BOERnet?

BOERnet is your farm's decision engine. It connects your data — soil, weather, crops, animals, machines, costs — into clear, simple actions that make money. No more guessing. No more separate apps. No more farming blind.

Why BOERnet Works



Built for SA

Load-shedding ready, offline-first, phone-friendly



Mixed farm

Crops + livestock



Simple language

Designed for real farmers, not software developers



Modular

Start small, grow smart

The BOERnet Stack

1. Data Ingestion Layer

All your farm data in one place:

- Soil & leaf test uploads
- Satellite & drone imagery (NDVI, biomass)
- Machinery & diesel tracking
- Weather stations and forecasts
- Manual forms via phone or WhatsApp

2. Intelligence Layer

Turns data into decisions:

- Fertilizer, spray, and seed recommendations
- Profit per hectare insights
- Risk analysis based on rain, soil, and zones
- Crop and livestock integration

3. Economic Engine

Know your numbers:

- Cost per hectare
- Yield × price scenarios
- Cash flow timing
- Profit by field, zone, variety, or animal

4. Advisory & Alerts

Action-focused guidance:

- Spray window open? You'll know.
- Moisture too low? Get a warning.
- Input waste? Fix it.
- Opportunity missed? Never again.

5. Livestock & Grazing

- Track camps, grazing days, and recovery
- Manage nutrient cycles (manure)
- Feed cost versus animal gain
- Ideal for cattle, goats, sheep, and chickens

6. Reporting & Compliance

- Export reports (Customizable Format)
- Full traceability: soil, spray, sample, harvest
- Carbon-ready and audit-ready logs

Farmer-First Design

- Mobile-friendly
- Offline-ready
- Big Data, farm terms, simple dashboards
- Scalable Architecture that grows with you

BOERnet VS Others

Feature	Others	BOERnet
Execution tools	✓	✗ (integrates externally)
Crop & Livestock	✗	✓
Offline-ready	✗	✓
Profit clarity	⚠	✓
Soil & biology insights	⚠	✓
SA-localised	✗	✓

They show dashboards. We show:
WHAT is happening | WHY it's happening | WHAT to do next

"Apply 18% less nitrogen in Zone B"

"Delay spraying 36 hours: rain risk too high"

"Zone 7: Use biologicals only"

"Camp 5 recovered: move livestock"

Ready to BOERnet?

- ✓ One system
- ✓ Real SA conditions
- ✓ Real profit tracking



SCAN HERE



Weather Station & Soil Probes

Weather stations + soil probes linked to crop growth stages (Delta-T, planting windows, stress detection).

How it improves profit:

- Plant & spray at the right moment
- Reduce chemical waste
- Detect plant stress & disease risk early
- Improve biological effectiveness

Right timing saves money and protects yield.



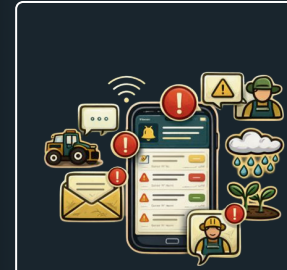
Equipment & Machinery Data

Planting, spraying & harvesting data + downtime, travel time, hours, cost/ha.

How it improves profit:

- Cut diesel & labour waste
- See true cost per hectare
- Improve machine efficiency
- Find slow or inefficient work

Every hour and litre accounted for.



Alerts & Notifications

Smart notifications & alerts to farmer and workers — from one system.

How it improves profit:

- Fewer mistakes
- Faster reactions
- Better execution in-field
- Less rework & waste

The right message, at the right time.



Soil, Plant & Crop Sampling

Soil sampling, leaf sampling & DJI multispectral imagery — all linked and analysed together.

How it improves profit:

- Fertilise only where needed
- Catch nutrient problems early
- Avoid blanket applications
- Confirm drone results on the ground

Measure first. Apply only what pays.



Livestock & Game Measurement

Camera-based animal counting & measurement with integrated weighing software.

How it improves profit:

- Sell at optimal weight
- Spot poor performers early
- Reduce labour & stress
- Save labour & time

Measure animals without touching them.



Inputs, Profit & ROI (Real-Time)

Live tracking of inputs, costs, yields and profit per hectare.

How it improves profit:

- See what really pays
- Stop low-ROI practices
- Compare fields & seasons
- Farm for profit, not yield

Every decision linked to profit.